

RENNtech®

User Manual

Suspension Control Module - 32 955 4003
www.renntechmercedes.com

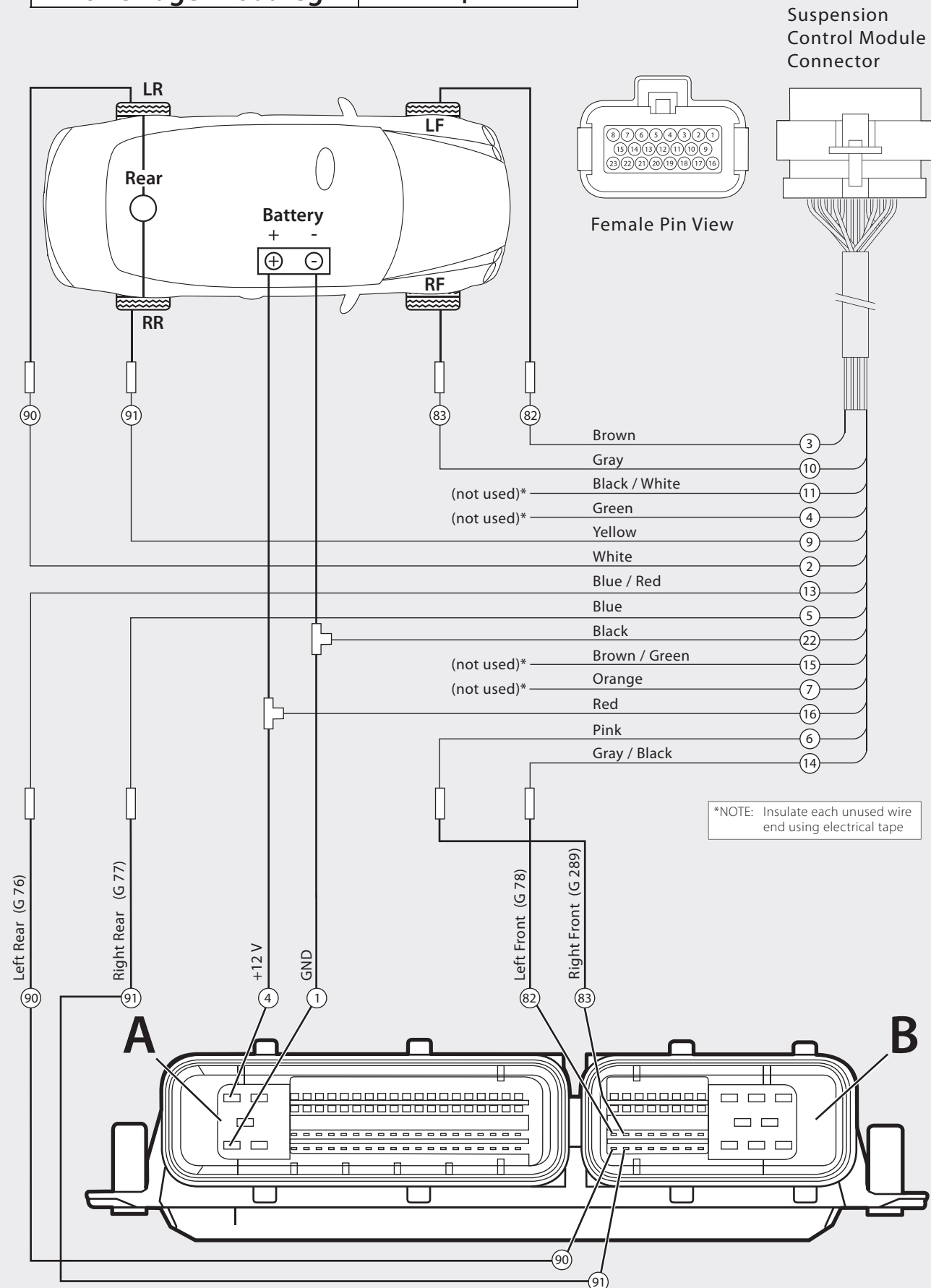
 **ProgRama.** www.programainc.com

Designed and manufactured by ProgRama, Inc.

Marketed and distributed by RENNtech Inc,
Lake Park, FL, 561.845.7888
www.renntechmercedes.com

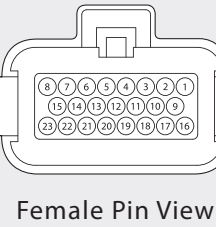
LCP-01
M-MIS-902558/1.0

Porsche Cayenne Turbo	Air Suspension
Volkswagen Touareg	Air Suspension

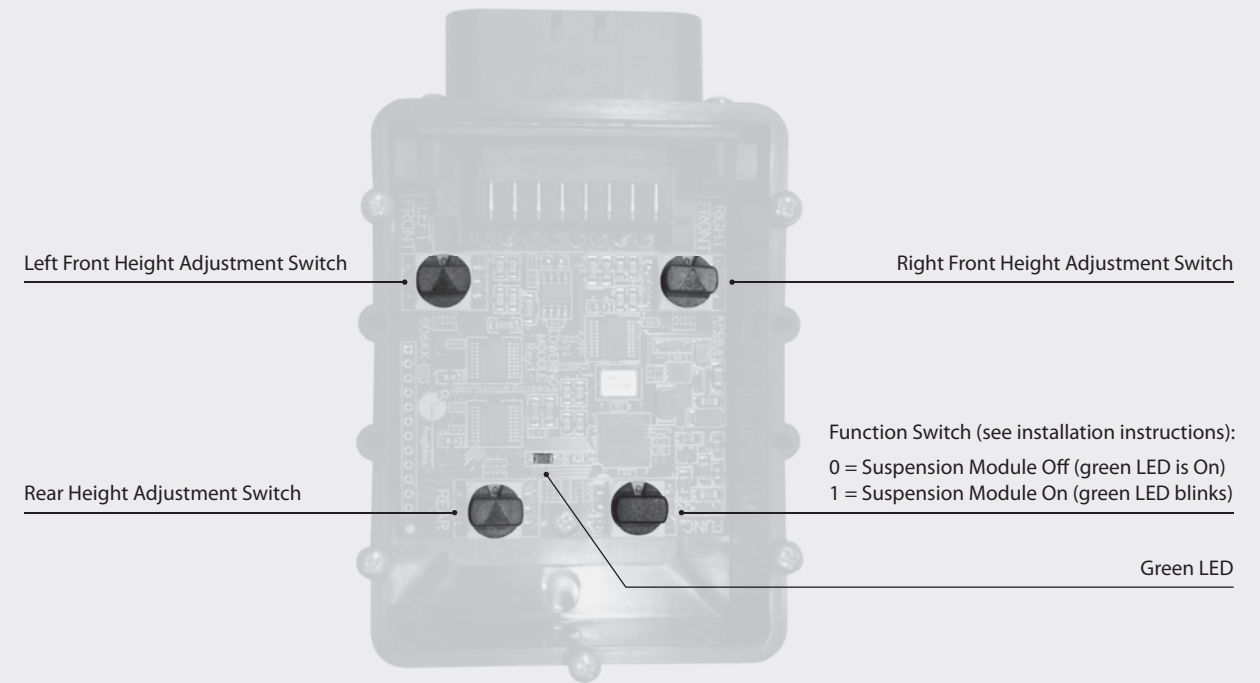


Vehicle Harness, Female Pin View

Suspension Control Module Connector



Female Pin View

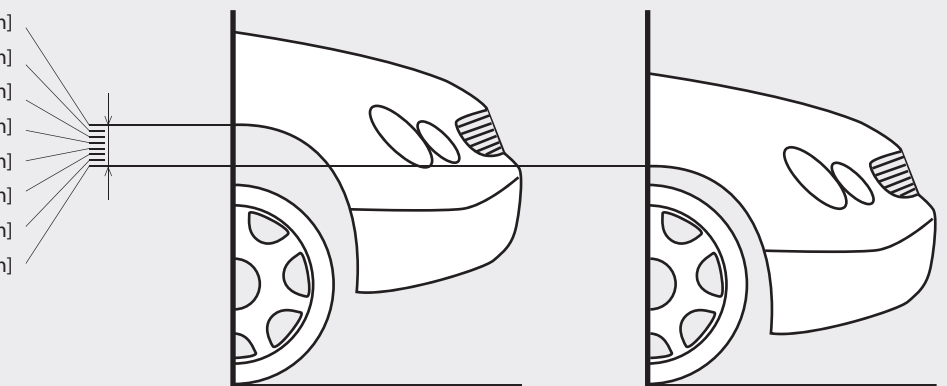


NOTES:

- It is quite common that even before the installation the individual wheels are not at the same level. This is much more noticeable when the vehicle is lowered. Small differences can be manually adjusted by rotating the individual Wheel Switches. Larger differences should be corrected at the dealer using proper equipment and procedure. Before going to the dealer, remember to turn off the RennTech Suspension Module by rotating the Function Switch (black button) to position 0. Once back from the dealer, rotate the Function Switch back to original position 1, as described in the Step-by-Step Installation.
- The pictured lowering values are approximate and will vary wheel to wheel and vehicle to vehicle:

Wheel Height Adjustment Switch positions

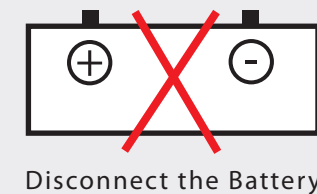
- 7: lower by 3/4" [20 mm]
- 6: lower by 1 1/8" [30 mm]
- 5: lower by 1 3/8" [35 mm]
- 4: lower by 1 1/2" [40 mm]
- 3: lower by 1 3/4" [45 mm]
- 2: lower by 2" [50 mm]
- 1: lower by 2 1/8" [55 mm]
- 0: lower by 2 1/4" [60 mm]



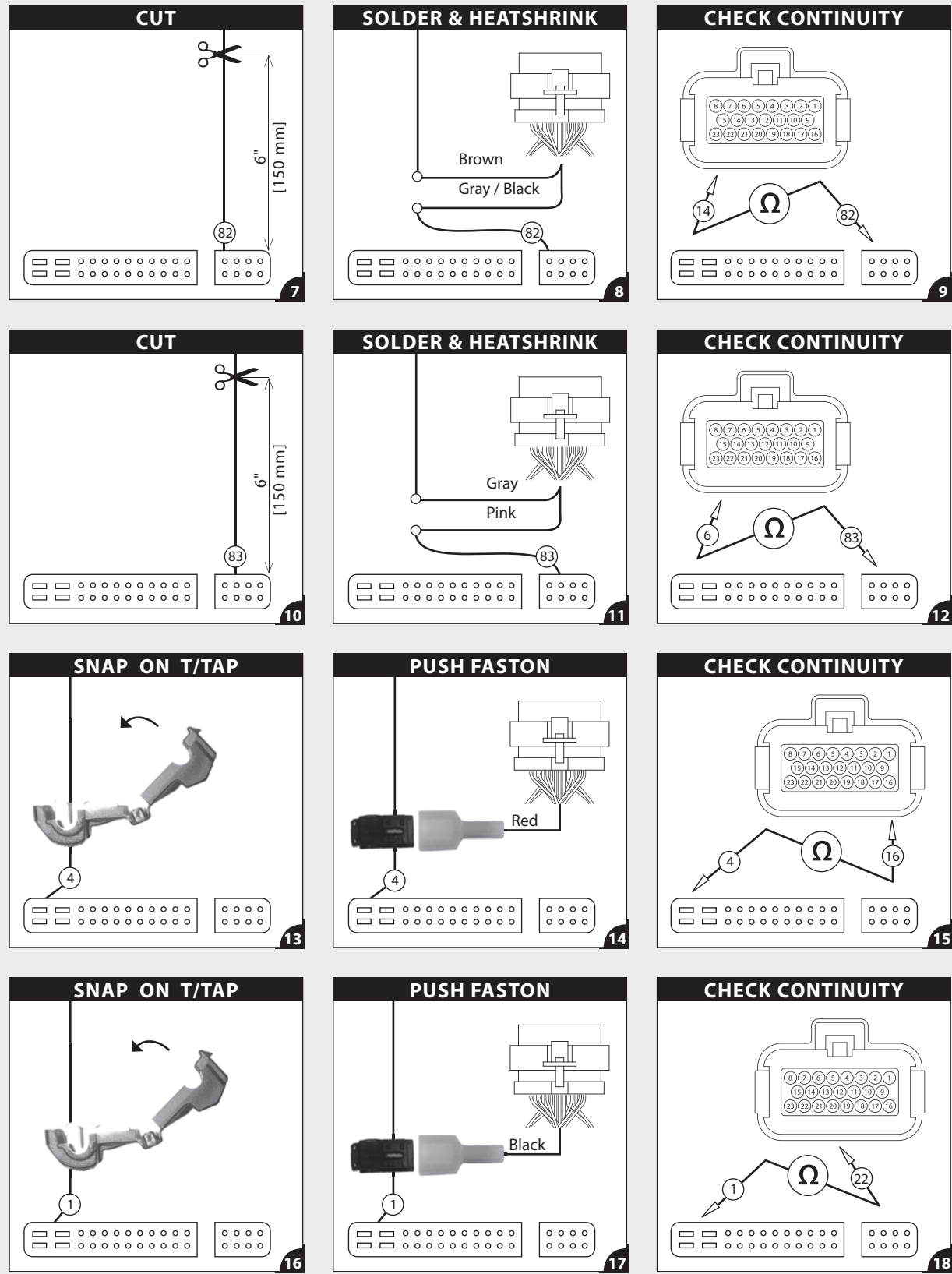
Ride Height Adjustment

<p>Rotate all three Wheel Height Adjustment Switches (gray buttons) to position 3 (medium height).</p> <p>1</p>	<p>Plug in the RENNtech Suspension Module.</p> <p>2</p>	<p>Reconnect the battery. Green LED in the Suspension Module should blink.</p> <p>3</p>
<p>Cycle the ignition key On then Off (do not start the engine).</p> <p>4</p>	<p>Start the engine. Make sure you are parked on an even surface.</p> <p>5</p>	<p>Press the factory Vehicle Height button (button LED On). Wait up to 20 seconds until vehicle raises.</p> <p>6</p>
<p>Press the button again to lower the vehicle (button LED on the button will turn Off). Wait up to 20 seconds.</p> <p>7</p>	<p>Adjust individual Wheel Height Adjustment Switches if required (to see the height changing, perform the next step).</p> <p>8</p>	<p>Cycle the Vehicle Height button again (button LED On then Off), with up to 20 seconds in-between.</p> <p>9</p>
<p>If still not satisfied, go back to step 8.</p> <p>10</p>	<p>Replace the Suspension Module cover.</p> <p>11</p>	<p>Congratulations! The vehicle is lowered.</p> <p>12</p>

STEP-BY-STEP INSTALLATION



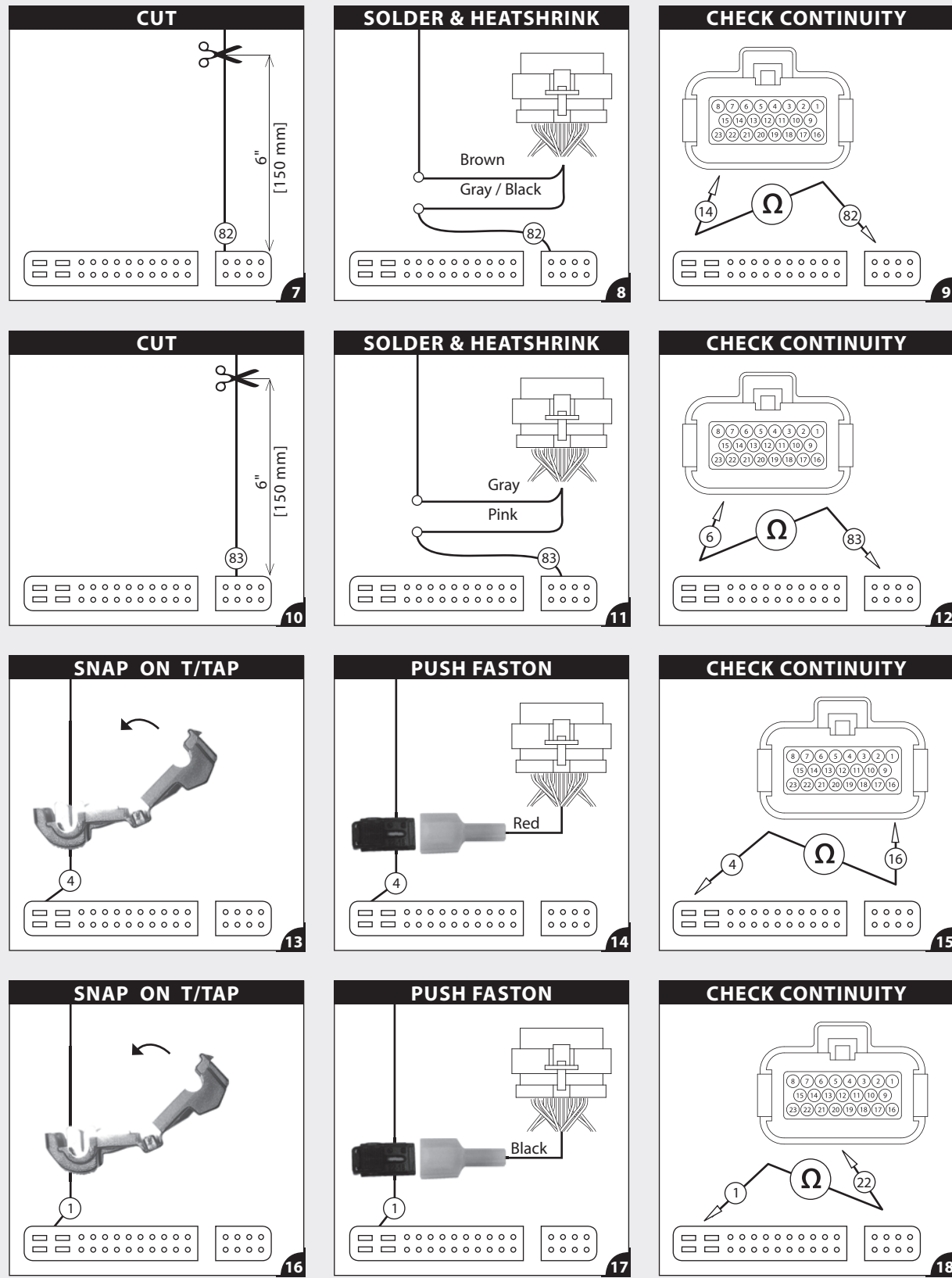
<p>Locate Air Suspension Module in trunk</p>	<p>Remove cover</p>	
<p>Air Suspension Module with connectors</p>	<p>Air Suspension Module</p> <p>Disconnect connectors from Module and proceed with installation.</p>	
<p>CUT</p> <p>1</p>	<p>SOLDER & HEATSHRINK</p> <p>2</p>	<p>CHECK CONTINUITY</p> <p>3</p>
<p>CUT</p> <p>4</p>	<p>SOLDER & HEATSHRINK</p> <p>5</p>	<p>CHECK CONTINUITY</p> <p>6</p>



Unscrew the Suspension Module screws and remove the cover.

Rotate the Function Switch (black button) to position 1.

To continue, go to Height Adjustment chapter.

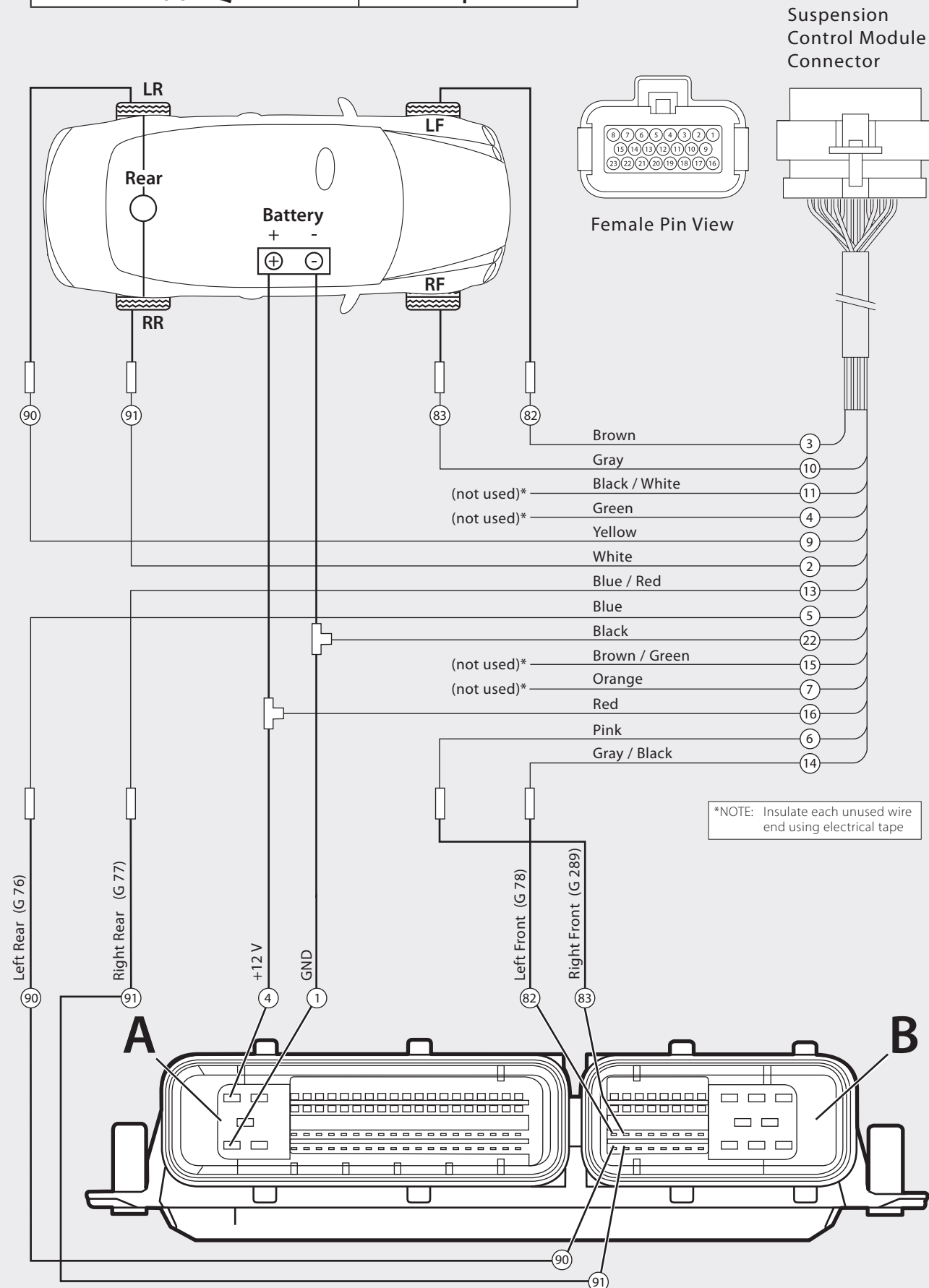


Unscrew the Suspension Module screws and remove the cover.

Rotate the Function Switch (black button) to position 1.

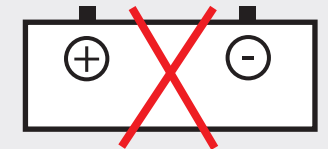
To continue, go to Height Adjustment chapter.

Audi A8	Air Suspension
Audi Q7	Air Suspension



Vehicle Harness, Female Pin View

STEP-BY-STEP INSTALLATION



Disconnect the Battery

Audi A8 ONLY

Air Suspension Module is located with the ECU, behind the CD-Player. To remove CD-Player you will need OEM Tool P/N 4D0 051 530 and a T-8 Torx Bit.

Audi Q7 ONLY

Locate the Air Suspension Module.

